



**Snow Special**  
pages 2 & 3

**CRUSADER**  
JAN. 26, 1973 NAMPA ID.



war ends

## POW - MIA visit first and last

This POW-MIA representative's first visit to the NNC campus Monday was also his last. Tuesday the Nixon Administration announced the end to America's 19-year involvement in Vietnam.



# Adventure-seeking Idahoans

## Skiing Flourishes at Bogus Basin



Despite its physical and financial risks, skiing has become America's number one winter sport. Numerous NNC students ski regularly with the co-educational ski class, Ski Club, or on their own. For those who have never skied, or have not skied in this area, here's some information to help you discover where to go, how to get there, and what you will have to expect to pay.

Bogus Basin is about seventeen miles above Boise, and you can get there from Nampa in less than an hour. With the addition of a new chairlift this year, Bogus has four lifts, two of them providing lighted slopes until ten o'clock Wednesday through Sunday nights. The lift ticket rates are: 10 a.m. to 4:30 p.m., \$6.00; 4:30 to 10 p.m., \$5.00; 6:30 to 10 p.m., \$4.00.

When you buy your lift ticket, the girl in the little wooden-shingled ticket shack will staple it to your pants pocket. This opens great opportunities for those quick-change artists who are undaunted by guilt or embarrassment. As you ride the lift up, remove your skis and boots, take off your pants, and drop them to your friend below who is on his way down. In this way, two can ski for the price of one.

Rental equipment is available at Bogus, and a complete outfit of skis, boots, and poles rents at the following rates: 10 a.m. to 10 p.m., \$7.00; 10 a.m. to 4:30 p.m., \$5.00; 1 p.m. to 4:30, \$4.00; 6 p.m. to 10 p.m., \$4.00.

Getting a ride to Bogus is not too difficult, at least not on Thursdays when all the ski class members drive up at various times of the day. If you do not know anyone in ski class, Mrs. Willis should be able to provide you with a list. Ski club members might also be willing to help you out. The man to see is club president Dick Knight.



photos by R. Bruce Moore



# enjoy winter wonderland

## Tubing offered at Steamboat Gulch

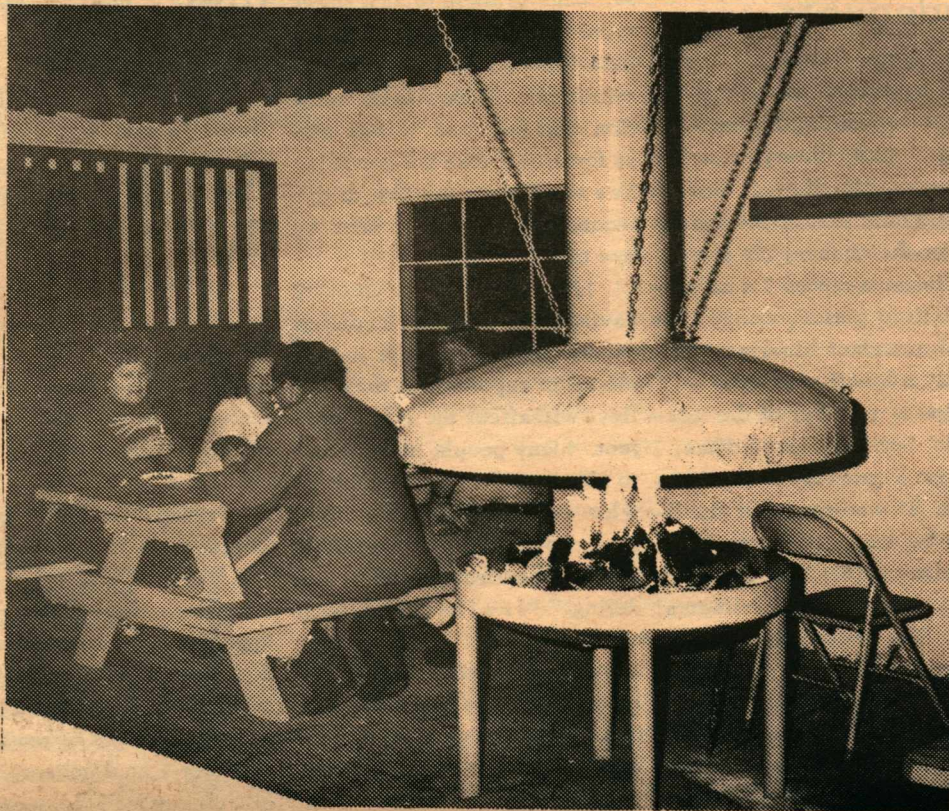
Excellent day or night tubing is offered at Steamboat Gulch, Idaho's only inner-tube resort. Located just outside Idaho City, the slopes are enclosed by highland wilderness.

Tubers are met by three separate and unique runs, each with rope tow. Night tubing under the lights is considered best since the colder evening temperatures make for faster runs.

Steamboat Gulch's facilities include a comfortable lodge where weary or weak-hearted tubers may find comfort around a fireplace with hot chocolate and home cooked Italian food.

The slopes are reached by taking Highway 21 out of Boise to Idaho City. Steamboat Gulch is located one mile past Idaho City.

Cost is \$2.00, with tube rental an additional \$0.25. The resort is open 10:00 a. m. to 10:00 p. m. Saturdays and Sundays and 6:00 p. m. to 10:00 p. m. Fridays.



## THIS TERM MEANS EXCITING SESSIONS EACH SUNDAY

AT 9:45 A. M.

JAN. 28 MISS HELEN WILSON.

## FOUR GREAT MOVIES

FEB. 4 "THROUGH GATES OF SPLENDOR"

FEB. 11 "DRUGS ON CAMPUS"

FEB. 18 "THE WON WORSHIPPERS"

FEB. 25 "ANGEL IN EBONY"

COLLEGE DEPARTMENT MEETS IN THE NNC ADMINISTRATION BUILDING

COLLEGE CHURCH OF THE NAZARENE  
JERALD D. JOHNSON, PASTOR



# the people... Letters from the people... Letters

## Library-hours story presented inadequate view

Dear Editor:

It appears to me that the article concerning Friday's opening of the library presented an inadequate view at best. It (1) told only part of the rationale for the change, (2) presented Librian's reports for an atypical time period, and (3) was based on student librarians' personally subjective reports.

As a member of the Academic Services Committee, I brought a proposal to the November 28 meeting that the library be kept open until 10:00 on Friday. This was passed unanimously on an experimental basis. The action was based on the rationale that (1) both students and faculty were in favor, (2) it could be done without any additional expenditure of funds, and (3) it would provide needed study time, especially at mid-term, term work time and finals, and would help to ease the pressure of the four course system. Miss Lancaster told me privately that she believed that the move would be worthwhile if only eight or ten students benefited each week.

The student library workers' reports given in the article present only one and a half hours of a single late evening. Even so, each of these reports shows more people using the facility than Miss Lancaster's informal minimum. There was no mention that the count was as high as forty, nor that the count increased from the first to the second Friday of the term by two to three times.

Librarians who are upset by having to work Friday evenings cannot make accurate judgments in reports that they believe will affect the future project. Many people may appear to them to be "daydreaming" who are thinking out a problem. Looking for materials may be construed to be "wandering," "leafing through books," or "looking through newspapers." Subjective judgments like these constitute little or no evidence as to whether the library is benefiting students.

In my opinion, the added operating time is of great value to NNC. This change has been too long coming, and there is ample reason to make the change permanent. It is unfortunate that last week's article didn't present the complete story.

Andy Bennett

## Opinions of John Bircher unacceptable

Dear Editor:

Listening to Charles E. Smith Tuesday was undeniably a learning experience, but what I learned was no doubt not what Mr. Smith was trying to put over.

Mr. Smith was quite emphatic about the existence of the "Communist" U.N. conspiracy, whose membership has included virtually all the leading American politicians of recent years.

Perhaps Mr. Smith is right (forget the puns). Perhaps he is not. In either case, he must be taken seriously because people apparently do believe him; he is a powerful influence. It is certain, though, that he offered to his listeners no reasonable basis for actual acceptance of his opinions for at least two reasons.

(1) The man had no conception of the possible non-existence of the alleged world con-

spiracy. This was evidenced by his failure to appeal to actual situations in order to support his theories. Realization of the possibility of error would lead him to search for specific evidence and to further realize that wrong conclusions may be drawn from even an accurate set of facts.

(2) Let us assume for a moment that the "Communist" conspiracy does exist, for it is indeed within the realm of the possible. Smith remains irrelevant because he offered no constructive alternatives or solutions. To withdraw from the U.N., to stop spouting garbage about the dangers of atomic weaponry, and to let Russia go hungry might serve to destroy the conspiracy, but the result might be worse than the conspiracy. Smith's vision of his perfect world free of the conspiracy and all other evils may well be untranslatable into the complex conditions of our modern world. And simply strangling the conspiracy is certainly not the ultimate solution to all world problems; merely raising people's emotions against

it is of no real value at all.

Mr. Smith's ingenious hypothesis must be disallowed for these reasons, I think, just as the very condemnation of the John Birchers, or anything, in the same emotional iconoclastic way is equally futile.

Marv Belzer

Circle K announces the grand opening of the "new" COBWEB next Friday and Saturday nights.

Live music Friday night will feature the guitar talents of Dave Mangum at 9 and 10:30 p.m.

Saturday night after the game the first annual Circle K Coke Guzzling Contest will take place, open to all students with a special prize going to the winner.

The COBWEB will be open every Friday and Saturday night following campus activities or at 8 p.m. if nothing is happening.

Entertainers burning with desire to perform in the COBWEB should contact Directors Brad Arnesen or Tim Wheatley.

## STEAMBOAT GULCH

Freshman Snow Party  
Feb. 2, 1973

Rope tows and Tube Rentals.

10 to 10 Sat. and Sun.  
6 to 10 Fri.

ONE MILE PAST IDAHO CITY  
RACE TONIGHT UNDER THE LIGHTS

## BULLDOG LANES BOWLING FOOSBALL POOL

special student rates  
-free instruction  
lanes available  
Fri.-Sat. Sun.  
and Holidays.  
466-6414

Pizza and Snacks  
467-2252

10 MINUTE SERVICE



### today

5:30 p.m. Frosh basketball. NNC vs Ferdinand Metal - Here.

★ ★ ★

7:30 p.m. Varsity basketball. NNC vs Lewis and Clark State - Here.

### saturday

4:00 p.m. Wrestling. NNC vs Pacific - Here.

★ ★ ★

5:30 p.m. Frosh basketball. NNC vs Nafzigers - Here.

★ ★ ★

7:30 p.m. Varsity basketball. NNC vs Lewis and

## at nnc

Clark State - Here. Lewis and Clark State drill team will provide half-time entertainment.

★ ★ ★

9:00 p.m. Wrestling. NNC vs TVCC - Here.

★ ★ ★

9:45 p.m. "The Haunted Palace," an Edgar Allan Poe film, in the Science Lecture Hall. Senior class is sponsoring this event. Admission is 66¢ per person or \$1.00 per couple.

### monday

A SNNC Convocation for presentation of Sweetheart Court nominees.

★ ★ ★

### tuesday

Baseball meeting for all interested in turning out for the varsity squad, 6:30 p.m. in Montgomery P.E. Building. Second and third term academic schedules should be brought to the meeting. Coach Vail should be notified before the meeting if you are interested but cannot attend this meeting.

### wednesday

Intramural Awards Convocation.

### next weekend

Wrestling team at Williamette and Warner Pacific.

★ ★ ★

Basketball team hosts C of I.



# OPINION AND COMMENT

RANDY CRAKER, Editor  
 RANDY PETERMAN, Managing Editor  
 NEIL READ, News Editor  
 DICK LUHN, Features Editor  
 LOREN ELLIS, Business Manager  
 JAN WEISEN, Production Manager  
 BURK JONES, Advertising Manager

VOL. XXII No. 9



# LIFE IN THE BLOODSTREAM

by Norm Sandlin

A lot of things have an effect on us that we little realize at the time, but will later show a great influence on how we perceive things in the Bloodstream of life. In looking back over my college days, I can see (almost term by term) how my attitude has changed. Be it good, bad, or indifferent, we all change as time progresses. Change is essential to a meaningful existence.

Change in attitude is brought on by many things. What people do to you personally can greatly affect how you feel, not only to them personally, but to what they stand for in general. For me it is very hard to overlook a person's inconsistencies. I always thought more of the

person who honestly did not feel right in taking communion and abstained, than the person who shared communion so everybody thought he was what they wanted him to be.

Growing up is a real pain sometimes. It really hurts to see and hear some of the things I have. Believe me, I don't want to go through it again. Sometimes I feel like just giving up trying to figure anything out for myself and just blindly accept the "truth" of others. But for me, that's an inexcusable out.

I'm glad I came to NNC. If I had it to do over I would do just the same. NNC is an excellent school and I have had some very good times here. In all aspects, academic, athletic, religious, and social, NNC has a well balanced life style.

I can't say enough about the professors. I have always had the feeling that they genuinely cared about me personally. I wasn't just a number or name on the role, but a real live person to each of them. I know!

This, among everything else, has impressed me the most and played a vital role in my attitude changes. My academic advisor will never know how much he has helped me!

I see now that the administrators in this school just can't win. They get pressure from two directions. Parents and church want one thing. The students want another. They have the oftentimes thankless job of deciding the policies of this school. I have not always agreed with various administrators, but as I grow older they don't seem to be as mistaken as they once were. Maybe it was just me all along, huh?

This is the last column you NNC Bloodstreamers will ever read. I have tried to express some important thoughts. If I have upset anyone while doing this, I am sorry.

It just seems impracticable to go on doing this column. For you business majors and anybody else, the law of diminishing returns is in fact a true law. I know!

## KCRH must appeal to NNC community

KCRH (you remember--that's NNC's radio station) is coming under fire from several aspects of the NNC community.

The radio station is funded by both the administration and ASNNC, the former providing \$4500 and the latter \$2360. Now both are questioning the merit of investing this sort of money in a radio station that appeals to only 10% of the NNC community (percentage taken from a survey of last year).

The administration, operating on a more limited budget than in years past, is anticipating a cut in KCRH's allotment. ASNNC has also formed an investigating committee, composed of Barry Grant, Randy Morgan, Lowell Drake and Jim Franklin, to evaluate the "effectiveness" of the radio station.

The fact that only 10% of NNC listens regularly to KCRH shows that something must be done. KCRH is wholly funded by NNC, yet its format and music fail to appeal to NNC students. "The Lawrence Welk Show" and "Germany Today" are just two examples of radio shows that fail to appeal to most of today's college students.

KCRH purports to provide music and services to the Treasure Valley not provided by any other area FM station. Yet its ten watts of power is so inadequate that some students in Oxford and Culver Halls cannot tune it in.

Let's face it: KCRH is useless if it is trying to provide a service to the community. It does not have the power to reach the community, and neither is it funded by the community. Its main thrust should be to NNC. The fact that NNC students pay for the radio station, as well as the fact that NNC students are the only people within range of KCRH's ten watts of power, make this fact only too obvious.

We do not ask that KCRH play one particular style of music; we only ask that they make their format and music more amenable to the school that supports it.

rj & rap

## LETTER POLICY

Letters to the Editor are welcomed from all areas of the NNC community. Letters are limited to 350 words and must be signed with an address. Letters must be typed (double-spaced), and must be in the Crusader office by 9:00 a.m. Tuesday.

The Crusader reserves the right to make any minor grammatical or punctuation corrections/additions necessary to present the letter in good journalistic form. The Crusader also reserves the right to withhold any letter it views as libelous or outside the bounds of good taste.

## Chapin Studios



Valentine Sweetheart  
 Banquet Photos

Feb. 10th  
 (in student center)

2 - 5 by 7's in folders natural color  
 4 - billfolds in natural  
 total cost \$5 plus .15 tax

815 12th AVE. SO.

NAMPA, IDAHO

## SCHMITT'S Shoe Repair

IF THE SHOE FITS

REPAIR IT



Come in for expert attention

YOUR SHOE SERVICE

116 12th Ave. So.

## BETTER GROCERIES at M&W market

NAMPA'S LARGEST  
 AND MOST COMPLETE  
 GROCERY MARKET  
 Holly Shopping Center





## top Spartans

## ADP's win tournament

The ADP's captured the first half basketball tournament by downing the Spartans 58-42 in the championship game.

The ADP's bested the Olys 85-55 to gain entry to the championship game. The Spartans easily defeated the LSP's 49-16, and got by the SLA's 56-47 to move to the final game.

Darrell Tyacke and Bob Sturtevant provided the scoring punch for the champs as they combined for 79 points in two games.

The Spartans had a balanced attack with Randy Craker's 21 points against the SLA's being the top performance.

Third place went to the SLA's who gained that position through a forfeit by the Oly's. Randy Meier and Mike Lemont scored 16 and 15 points in their only contest.

The Oly's captured fourth by taking an overtime win from the Athenians 41 to 38 in opening-day action. They lost to the ADP's in the semi-finals before a forfeit dropped them into fourth place, Wayne Skeen and Randy Peterman were the top scorers, netting 27 and 23 points in two games.

In the losers bracket the Athenians bombed the LSP's 70-37. Randy Price hit a tournament high of 34 points for the winners. Rick Shafer and John Wilcox both managed to hit double figures in the two Athenian outings.

Joel Howard was the only LSP to score double figures for the last place club. He got 16 points in the final game.

## Injured matmen to see action

The NNC wrestling team has gotten off to a poor start this year, being seriously hampered by a small turnout and a rash of injuries.

Last weekend the wrestlers could have participated in a tournament at Ontario, but could not round up enough men to field a team.

This week Larry Bowles has been sick with the flu, Gene Benjamin has an injured shoulder, Tom Shields is recovering from rib injuries, and Leon Harper limps badly on a strained knee. Lyle Hills, one of the few experienced wrestlers, is out for the season for an elbow operation.

Everyone, injuries and all, is expected to see action in tomorrow's action against Pacific at 4 p.m. and Treasure Valley Community College at 9 p.m. Transfer Jerry Shaffer turns eligible for Saturday's contests.

## INTRAMURAL SPORTS SHORTS

by John Wilcox

The second half of basketball has started, but only two games have occurred. The ADP's remain the top-dog as they squeezed by the always tough SLA's. The ADP's held only a one-point advantage at half-time 27-26, but increased it as Darrell Tyacke poured in a dozen points in the second half. He led the ADP attack with 18 tallies, followed by Marv Merkel and Bob Sturtevant who goaled in 16 points. Steve Galloway concluded the double figure scoring efforts with 11 points. Larry Bishop, a tall newcomer to the already physical SLA's, popped in 21 points for the losers. The final score was close for an ADP game, 63-55.

Woe are the LSP's. They need some help, and I think I can take the liberty to beg, if needs be, for those LSP's who are not participating in the athletic facet, to get out and help. Tuesday, they got swarmed under by an undermanned, but obviously sharp-shooting Olympian team. The Oly's could get only four men to play, but easily walked over the LSP's 83-41. Randy Peterman led the tenacious quartet with 28 points. Bobby Miller canned 21 points, Mark Sparks surprised everybody with his shooting ability and got 18 points. Eugene Hanzlik brought up the rear with a very respectable 16 points. Steve Louis did all he could to bring his



The SLA's and ADP's fight for a rebound in recent intramural action. The ADP's won the game 63-55.

team up to respectability by getting 19 points, but scoring support did not come.

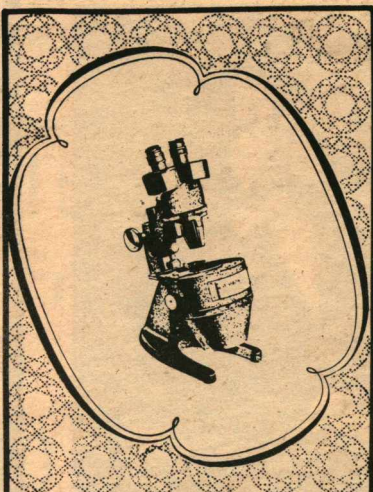
\*\*\*\*\*

"Now is the time for all good men and women to come to the aid of their society." Coed volleyball is over in reality, but lives on in memories. A rather successful season has passed, with 83 participants. Were you one? If so, you can vouch for the fact that it was fun. Participation points are awarded to the societies for every person playing, and not for a victory or a loss. In other words, it's not if you win or lose but if you play the game.

The season ended with the

ADP's on top (who else?). They had a 6-1 record. The Oly's were 2-1, the LSP's and SLA's were both 2-2, the Spartans were 3-5, and the sorrowful Athenians were 0-3, with only four participants total, all season!

Paul Harmon, a Spartan, and Al White, an ADP, both said, "It was the time of my life." These guys are not easily satisfied either. Intramural Director Coach Vail would love to see more participation, as "recreation is fun!" So girls, get the joints juiced, the muscles stretched, and the blood flowing by getting involved in intramural recreation.



## The heart of the matter

Finding the "heart beat" of your diamond is no trick at all for the finely engineered instrument pictured above. It is the special 10-power magnifier that professionally trained jewelers use to see into the heart of a stone.

The fashioning and internal markings which might affect the per carat value of a diamond are clearly revealed. We will be happy to show you the diamond you select under this instrument, and explain details of its value.

**Sealy's**  
9th and Idaho  
**JEWELERS**  
DOWNTOWN BOISE  
TERMS OF COURSE!

BRASS LAMP  
PIZZA & ALE HOUSE

139 Nampa-Caldwell Blvd.



**EVERY DAY LUNCHEON SPECIAL**  
Look!  
**TRENCHMAN LUNCHEON**  
your choice  
Ham & Cheese  
Turkey Treat or  
Salami & Cheese  
plus salad &  
soft drink  
97¢  
Mon.-Thurs., 11:30  
A.M. to 4:30 P.M.



SPECIAL for all NNC STUDENTS  
**\$1.00 off**  
with coupon

on any GIANT or LARGE PIZZA

GOOD ANY TIME

**YOU'RE IN FOCUS**  
WITH *Fashion Framed* GLASSES

**Get With It...  
In Newsiest  
Look Frames!**



Lightweight wire frames in the top shapes are here. Available in regular prescription or Photogray that darkens to a neutral gray in sunlight.

**HALLMARK**  
Dispensing Opticians of Idaho  
Across from Kings—718½ Arthur St.  
Caldwell







# SPORTS

Editor Bob Hieb  
Intramurals John Wilcox

Page 7

January 26, 1973

## Uriah's heap

A fever builds within you as you walk from the dining room. Your hands itch and tremble nervously at your sides. But you are strong, you will fight the demon which would once again take possession of your very soul.

Setting your eyes on the east doors, you stride forcefully, rapidly toward the cool evening air which will revive you.

"Hey, Bob, what do you ..."—someone stops you and starts some inane conversation. But they are wasting their time. For they have broken your concentration and now those glorious sounds explode in your ears: the sound of KFXD playing loudly in the background, perhaps the stirring theme from "Deliverance;" the sound of many voices rising and falling on some mysterious cue; and the terrible sound of the ferocious snap and crack of the foosball machines.

All resolve has dissipated. A hard right, a quick drink at the water cooler, and you are there.

The room is long and narrow. A sofa down at the far end, the radio-phonograph and a few shelves on the right, a couple of hard chairs scattered about; there is nothing else to detract from the twin foosball machines and their worshippers.

You go in slowly, letting the odor of many bodies, of sweating players, the violent sounds, and the aura of tension permeate your being.

Clutching your quarter firmly, you step up to the first table. Darrel Tyacke has just captured the ball with his forward. You know the inevitable result, but hypnotized, you wait for the snake to strike. So great is his control that the ball appears to be attracted magnetically by his man. He moves the ball slowly along in front of the goal. Sensing an opening, he (too quickly for the eye to actually follow) moves his man from beside the ball to behind the ball for a quick, hard slap shot that raps into the open goal.

You move on. Playing against Tyacke isn't so much humiliating as it is disgusting. Everyone gets beat by him, so that doesn't make you feel so bad; it's the fact that you hardly get a chance to hit the ball. Playing against Tyacke is only for affluent masochists.

At the next table Peggy Stiltner and Robin Pyles are shaming their male opponents. It is debasing to lose to women, especially in such a virile sport as foosball. But at least they don't hit the ball quite so hard, so you do get a few swings in, even if you fail to score.

Peggy and Robin play basically a defensive game. Robin effectively cuts off that long, driving shot from the opponent's goalie, which a good player with those characteristic strong, quick wrists can consistently score on. And Peggy, at least for the average player, is practically impregnable as goalie. I believe the Crusader win over Pacific can be at least partially ascribed to Peggy and Robin, who broke down a couple of the Pacific players prior to the game in the foosball room.

You decide to chance it. You pick out a partner, preferably someone a little worse than yourself, so you won't feel so guilty about missing all of those shots. And then you slap your quarter on the corner of the table.

The challenge is on!

To date foosball addicts have fed 3,497 quarters to the machines. The Student Center owns one of the machines and is renting the other. Total costs have been \$938.55, leaving a profit of \$25.70. However, from now on the intake should be almost pure profit. Student Center director Steve Dickerson says the profit may be invested in other projects. There has also been talk of attempting to lower the price.

## Crusaders drop trio of contests in Oklahoma

The NNC Crusaders lost three games at Oklahoma City last weekend to drop to a 6-12 season mark.

Thursday night NNC was down by only one point with two and a half minutes to go, but blew an easy layup to spoil their comeback opportunity. Oklahoma Christian proceeded to score on a three-point play and went on to win 70-61.

OCC's Dwight Porter led the evening's scoring and rebounding with 21 points and 15 rebounds. He was supported by Don Whitehead's 16 points and Reed Johnson's 12.

Four players scored in double figures for NNC, with Dick Luhn getting 18, Ray Rumpel

and Steve Phelps 12, and Jay Nutting 10. Rumpel also pulled down 13 rebounds.

Friday and Saturday NNC went against a tough Bethany Nazarene College club. NNC coach Orrin Hills compared Bethany to Olivet, who also beat his players twice in the Holiday tournament.

Shooting percentages told the story Friday night. Bethany hit nearly 50 per cent while NNC could only find the basket 35 per cent of the time. Behind this kind of shooting NNC took its worst beating of the season, 80-53.

Rumpel was held to only four points. It was the first time this year he has failed to

break into double figures. He did come up with 13 rebounds, but received little support as Bethany controlled the boards, 54-46. Bethany benefited from a decided height advantage.

Nutting led the scoring with 14 points and Luhn added 12 for the Crusaders. Jeff Jantz and John Miller both scored 13 for Bethany, followed by teammates Jim DeGrate with 12 and Tom Wallace with 10.

In the last game of their trip the Crusaders found themselves losing again to Bethany 83-72.

NNC played a miserable first half but came back to play what Hills called their best half of the weekend. But it was too late as they were down 43-26 at the half.

Rumpel, Nutting and Luhn all scored 20 points for NNC. DeGrate led Bethany with 18 points, closely followed by Miller with 17 and Wallace with 16.

Rumpel led NNC rebounding with 18 rebounds, but once again received little support as Bethany out-rebounded the Crusaders.

Tonight and tomorrow night the Crusaders are hosting Lewis and Clark State.

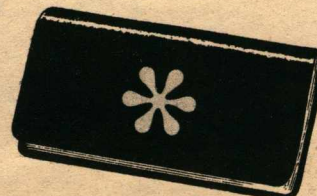
Paul Ellerbrook, 6-10 transfer center, will become eligible for play this weekend. He should see a lot of action, according to Coach Hills.



1

1

TODAY'S  
ASSIGNMENT:  
Commit the  
following  
to memory ...



\* You may want  
your checkbook cover  
imprinted with school  
insignia.

Get one TODAY at  
Idaho First when you  
start your student  
checking account.

AT THE  
**IDAHO FIRST**  
NATIONAL BANK  
THERE'S  
**NO SERVICE CHARGE**  
ON STUDENT  
CHECKING ACCOUNTS

... ABSOLUTELY NONE

On today's campus the checkbook is used almost as often as the textbook (or, is it vice versa?). And, at Idaho First you may write as many checks each month as you like — still no service charge. What's more, there need be no minimum balance maintained in your account. If we can ease your checkbook problems, it may be easier to solve your textbook problems. We hope this helps.

**IDAHO FIRST** *National Bank*  
MEMBER FEDERAL DEPOSIT INSURANCE CORPORATION



## Valentine banquet and "Camelot" coming Feb. 10

"A Lovely Way to Spend an Evening" is the theme for this year's Sweetheart Banquet, to be held February 10, at 8:00 p.m.

The program will include entertainment by the Capitol High School choir, the introduction of the sweetheart court and a special film. Jim Bentley will emcee the evening's activities.

Pictures will be taken at 7:00 by Chapin Studios. The \$5.00 cost will include two 5x7 and three billfold size pictures.

Price for the banquet, which will be held in the Student Center, is \$6.00 per couple. A \$7.50 ticket may be purchased which will include the special showing of "Camelot" plus a late pass.

Formal dress is expected but tuxedos are not necessary.

### NAMPA'S ROLLERDROME

ONE OF THE NATION'S FINEST!

#### PUBLIC SKATING SCHEDULE:

Wed., Fri., Sat. evenings  
Sat. & Sun. afternoons

Private parties on Mon.,  
Tues., Thurs., evenings or  
Mon. thru Fri., afternoons



A change in the scheduling of second term final examinations has been announced by the office of the Academic Dean. Finals will begin Thursday, March 15, and conclude on Saturday, March 17. Finals were originally planned for Thursday, Friday, and Monday, the 15th, 16th, and 19th of March. This schedule, however, made it necessary for students to remain on campus for an extra weekend. The new test schedule will allow students a longer vacation.

## Stewart elected; Morgan resigns Senate position

A senate vacancy was filled and another created last week. J. D. Stewart is the new sophomore senator, and Junior Randy Morgan is the outgoing senator.

Stewart needed a second run-off vote before replacing sophomore senator Doug Tibbs. The first vote between Stewart and Shelly Jensen ended in a tie making it necessary for a second balloting. Stewart won the second decision 84 to 79.

Another vacancy was registered Tuesday as junior senator Randy Morgan announced his resignation in the senate meeting.

Sign-up to fill this vacancy will continue through Monday at the ASNNC office. The election will be held Wednesday.

## Bircher cites conspiracy

"One cannot support the United Nations without committing treason," Charles E. Smith told NNC students and professors Tuesday in the student center lounge.

Smith, who is editor and publisher of the Voice of Watts newspaper, and a member of the John Birch society, told the group that the U.N. Charter was designed by those whose goal is to enslave the people of the world by forming a Communist world dictatorship.

America's involvement in the U.N., the "new federalism" and Nixon's revenue sharing plan, the "garbage" propagated about the danger of the atomic bomb and subsequent disarmament programs, the U.N. peace force and the recent U.S.-Russia wheat deal were all termed elements of a criminal design to establish world government.

Among the Americans allegedly involved in the Communist conspiracy are Richard Nixon, Henry Kissinger, Averill Harriman, David Rockefeller, other prominent Johnson and Nixon Administration figures, and "every Presidential candidate we have had in 30 or 40 years."

"Why should a capitalist like Rockefeller want state ownership of everything?" asked the speaker, going on to explain that such men intend to be the state. In fact, "David Rockefeller is not working for the Communists; the Communists are working for him."

The speaker's prepared remarks were followed by a question period in which Smith asserted that the McGovern candidacy following a "radical" Democratic convention last

summer was staged by the conspiracy in order to insure that "Boobus Americanus up in Idaho" would vote for Nixon.

The Soviet-China rift and the Vietnam war are only impressions created by the Communist conspiracy members who are, at the highest levels, working together while the actual fighting is done by "rinky-dinks" and peasants.

## Psych lab constructed

by Jan Rank

Psychological experimentation at NNC is being improved by the construction of a psychology laboratory system in the basement of the classroom building. The complex is composed of three 8 x 10' experimental rooms, an animal room and a combination shop and storage equipment room complete with Dutch door. The rooms are arranged in a semi-circle opening up into a large classroom area which will be furnished with tables for use as a general laboratory.

The first of the experimental rooms will house the Digi-Logic electronic control system for the entire area. By use of tubes carrying input and output wires from this system, any of the experimental rooms and/or the classroom may be set up for automatic experimental conditions. Such experiments may range in complexity from the simple ratio-interval reinforcement of a rat in a Skinner box to more varied and complicated problems with human subjects.

The outside wall of the complex is composed of sand-filled block to reduce outside noise and interference. The interior walls are sound-dampened to reduce the noise level by 45 decibels. Double doors separate the rooms from each other and heavy solid doors to the outside further cut down the noise.

The experimental area should be ready for limited use within a couple of weeks.

## FORMAL WEAR

### RENTAL Order Early SERVICE



- \* TUXEDOS
- \* WHITE & COLORED DINNER JACKETS
- \* FOR WEDDINGS
- \* ORDER EARLY

BEST PRICES

*Howard Nafziger*

FINE MEN'S WEAR  
NAMPA CALDWELL

Meet the NEW OMEGA Compact  
Olds. at a Compact price  
Dobbs Bros. Motor Co. your  
Oldsmobile-G.M.C. Dealer.

NAMPA

PHONE 466-3564

A service for those who  
want something different  
CONTEMPORARY WORSHIP 8:30 A.M.

Franklin Road Church  
of the Nazarene

Bus transportation from the Student Center at 8:15 a.m.

Work Sundays? Then worship at this early morning service.

**Bullock**

OPEN A CHARGE  
ACCOUNT!

1217 1st St. S.  
Nampa

*jewelers*  
Roy Shogen,  
Owner-Manager

OPEN FRIDAY NIGHTS  
UNTIL 9:00 P.M.